



## News and Events, December 2024 Edition

### FROM THE PRESIDENT'S DESK

The Sweepstakes contests have come and gone, and the 2024 CQ World Wide Contests are also now in the rear view mirror. Wow, what a month November has been. The Most Radio Active (MRA) report from W4NZ will surely have some pretty big numbers. Thanks to all of the TCG radio operators who have been getting on the air and making QSOs. Thanks also to those putting in the hard work to keep their (and other's) stations QRV. Finally, thanks to those hosting guest operators and multi ops, giving others the chance to experience the thrill of contesting.

DX propagation has been outstanding for the last couple of months, with ten meters almost open daily. Even six meters is showing some occasional DX F2 propagation, something that we have not seen for a very long time. December's ARRL Ten Meter Contest should be very interesting this year. Now is the time to make sure that your ten meter antennas are in good working order.

TCG has put together the necessary funds to sponsor a tent for WRTC-2026. We are sponsoring the Africa #1 tent. WRTC is very grateful to all the members who donated. WRTC is the highest profile event in all of Radiosport and deserves our continued support.

See you in the Ten Meter Contest pileups. This one should be a hoot!

73,

—Kirk K4RO



### CONTEST MENTORING – Billy Cox AA4NU

So, I had a "guest-op" over this past weekend for the ARRL SSB. Pretty decent score really, so what were the "working conditions"? Well, glad you asked ...

The 2x stack to the SA/CARIB really didn't get used much, wrong direction, wrong contest, perhaps another day and contest soon? Ditto for the 3x stack on EU, other than being useful for burning a path up through the NE. "No meters, like 20 meters" as the song goes.

The 2x stack to JA was more useful as both those yagis do rotate, I think I may call that combination my "Twist and SHOUT!" stack? On 40m, the 3/3 yagi stack were monsters, the lower one lit up the NE and the upper one pointed to the west, welcomed W6's over and over.



The 80m 4x array/with FCPs, while not made for domestic usage, served well when pushed into duty for a few hours during the night.

160m? Come back in a few weeks and we'll play ARRL 160 CW SS, so the 2x phased array took the weekend off.

For those ESP QSOs, no fear, the mighty SAL30 out in the front yard is there to help you get 'em the log, every time, all the time. Take all the above and add in all the latest SO2R hardware/amps/rigs and whoa you might have a chance at placing "on up there" for that whiz-bang on-line scoreboard?

In fact the "guest-op" worked up to 11th slot and stayed there for most of Sunday, holding on until the very end ...not so bad really for all the cool stuff listed above right?

I mean really ... Some pretty serious "RF Heavy Weights" in the 10 slots above him:

1	K1KD	223,380	1,314	85	Minnesota Wireless Assn
2	NJ4P (K9TI)	222,360	1,308	85	Society of Midwest Contesters
3	NS0R	216,920	1,276	85	Kansas City Contest Club
4	ND4Y	208,590	1,227	85	Kentucky Contest Group
5	K6LL	198,900	1,170	85	Arizona Outlaws Contest Club
6	K3DNE	196,520	1,156	85	Swamp Fox Contest Group
7	K6TU	187,992	1,119	84	Pizza Lovers 259
8	WA2BOT	181,220	1,066	85	Yankee Clipper Contest Club
9	WT9U	170,680	1,004	85	Society of Midwest Contesters
10	K3MM	170,340	1,002	85	Potomac Valley Radio Club

Pretty certain WA2BOT = the monster K1TTT station?

Whoops, other than the very first line, the rest is make-believe. The top ten rankings, and he, the guest op, was 11th, well that is very true.

But, but(t), but(t)...ya gotta have all that hardware, all that and more, right? 'Cause we all know without all that stuff, well, is it really worth turning the rig on?

The reality is the only antenna that was working last weekend was a Vibroplex EFHW, with an average height maybe around 30'...maybe. One working antenna, at Plain Jane AA4NU site, nothing fancy here. One radio, that the "guest op" had never used much less seen before One amp, throttled back a bit to not overheat the EFHW matching xmfr.

Oh, the guest op? That's Max N4ML from Alabama. He had never operated any SS. He had never run stations on SSB. He had never run "almost" high power. He had never done a "guest op" before. But he listens well, is very teachable, and learns on the fly FAST. And THAT made all the difference as I spent very little time in the shack, other than making certain he had food, and everything was semi-working, He had never been to AA4NU before, nor had we ever met before the SS.

If he could replay the same SS, he WOULD be in the Top Ten, as he had to try things his way, then was open to some ideas to take things up a notch.

Like:

1. I told him to keep things simple (Basic N1MM, no ESM, minimum F-messages).
2. Run every moment he could, max out the mult/qso window in N1MM.
3. Stay in the chair other than bathroom breaks, stay planted in the chair.
4. I did give him a bit of "pre-contest homework" to position him for success.

My point, and we all do this at times, all of us: We tend to forget just how much of this is "grayware" first and then the "hardware". (Someone reading this is smiling right now, as he has heard all this before ...a long time ago).

The last two things I told Max before the SS started and I left the room:

1. You will be LOUDER than you have ever been before.
2. So, you will be a BETTER operator that you have ever been before.

And look at his results. Max is 19-20(?), and part of the ACG.

```
Class: SO Unlimited HP
QTH: Tennessee
Operating Time (hrs): 24
Band QSOs
-----
80: 195
40: 303
20: 385
15: 69
10: 21
-----
Total: 973 Sections = 85 Total Score = 165,410
```

We need more Max, N4MLs in our mix, who believe in what they can do, or might do, and don't get hung up on what they might think they can't.

So ... Run what ya have to just have FUN, and have FUN by just running what ya have!

73, Billy, AA4NU

On-Site Curator - The Museum of Broken Elements,  
Bent Booms, and also Selected Obsolete Operators

— • • • —

### CONTEST ACTIVITY

Here is a selected list, as of this publication, of those who put up scores on [3830 Scores Summary](#) in November:

#### ARRL Sweepstakes Contest, CW 2024 Nov 2

##### Single Op HP

Call	OpMode	Remote	QSOs	Sections	Op Time	Score	Club
W3TB			529	80	9:46	84,640	TCG
W4UT			217	85	9	36,890	TCG
K4RO			226	64	2	28,928	TCG
KA4OTB			65	38	5	4,940	TCG

##### Single Op Limited-Ant HP

Call	OpMode	Remote	QSOs	Sections	Op Time	Score	Club
W3TB			529	80	9:46	84,640	TCG
W4UT			217	85	9	36,890	TCG

##### Single Op LP

Call	OpMode	Remote	QSOs	Sections	Op Time	Score	Club
WF7T			204	65	3	26,520	TCG
K4KYN			126	74	6	18,648	TCG
W4NZ			100	53	3	10,600	TCG
KT4RH			8	8	1	128	TCG
K4DXV			7	7		98	TCG

##### Single Op Limited-Ant LP

Call	OpMode	Remote	QSOs	Sections	Op Time	Score	Club
K4DXV			7	7		98	TCG

##### Single Op QRP

Call	OpMode	Remote	QSOs	Sections	Op Time	Score	Club
KØEJ	SO2R		630	85	19	107,100	TCG

##### SO Unlimited HP

Call	OpMode	Remote	QSOs	Sections	Op Time	Score	Club
AD4EB			715	85	10	121,550	TCG
K1GU			492	83	11	81,672	TCG
NS4X			426	85	7	72,420	TCG
KEØL			260	85	8.5	44,200	TCG
WM4Q			200	85	6:15	34,000	TCG
K3FH			192	67	6	25,728	TCG

##### SO Unlimited Limited-Ant HP

Call	OpMode	Remote	QSOs	Sections	Op Time	Score	Club
KEØL			260	85	8.5	44,200	TCG
K3FH			192	67	6	25,728	TCG

##### SO Unlimited LP

Call	OpMode	Remote	QSOs	Sections	Op Time	Score	Club
N9TF			414	81	12	67,068	TCG
W4CMG			385	85	13:35	65,450	TCG

##### SO Unlimited Limited-Ant LP

Call	OpMode	Remote	QSOs	Sections	Op Time	Score	Club
N9TF			414	81	12	67,068	TCG

**OK/OM DX Contest, CW 2024 Nov 9****SOAB HP**

Call	OpMode	Remote	QSOs	Mults	Op Time	Score	Club
K3IE			80	57	02:30	27,189	TCG
N8UM			64	44	3	6,204	TCG
AD4EB			33	30	1	2,970	TCG
W3TB			8	8	0:26	192	TCG

**SOAB LP**

Call	OpMode	Remote	QSOs	Mults	Op Time	Score	Club
W4CMG			11	11	1	363	TCG

**SOSB/20 HP**

Call	OpMode	Remote	QSOs	Mults	Op Time	Score	Club
W4NZ			5	5	1	250	TCG

**ARRL Sweepstakes Contest, SSB 2024 Nov 16****Single Op HP**

Call	OpMode	Remote	QSOs	Sections	Op Time	Score	Club
K0EJ	SO2R		615	83	8	102,090	TCG
W4SDX			285	75	4.5	42,750	TCG

**Single Op Limited-Ant HP**

Call	OpMode	Remote	QSOs	Sections	Op Time	Score	Club
W4SDX			285	75	4.5	42,750	TCG

**Single Op LP**

Call	OpMode	Remote	QSOs	Sections	Op Time	Score	Club
K4HWS			137	82		22,468	TCG
AD4EB			151	62	3	18,724	TCG
WA4JA			121	62	5	15,004	TCG
N4MCC			98	47	9:30	9,212	TCG
KT4RH			60	41	4	4,920	TCG
K3IE			53	29	1	3,074	TCG
K4DXV			11	10	0.5	220	TCG
WN8Y			10	7	2	140	TCG

**Single Op Limited-Ant LP**

Call	OpMode	Remote	QSOs	Sections	Op Time	Score	Club
N4MCC			98	47	9:30	9,212	TCG

**WAE DX Contest, RTTY 2024 Nov 9****M/S HP**

Call	OpMode	Remote	QSOs	QTCs	Mults	Op Time	Score	Club
NJ4P		x	2124	2503	1017	48	4,705,659	TCG

**Single Op HP**

Call	OpMode	Remote	QSOs	QTCs	Mults	Op Time	Score	Club
W4GKM	SO2R		685	513	143	19:00	410,571	TCG
NS4X			144	150	98	4	28,812	TCG
AD4EB	SO2R		100	50	126	1.5	18,900	TCG
AF4T			44	0	68	2.80	2,992	TCG
AA4DD			21	0	36	1	756	TCG

**Single Op LP**

Call	OpMode	Remote	QSOs	QTCs	Mults	Op Time	Score	Club
N4MCC			264	0	257	18:39	67,848	TCG
WN8Y			329	329	196	10	64,484	TCG
N9TF			221	0	239	8.5	52,819	TCG
AI4DB			90	30	132	13	15,840	TCG
WV4AM			33	25	4	2	3,596	TCG
K4DXV			19	0	40	2.5	760	TCG

**SO Unlimited HP**

Call	OpMode	Remote	QSOs	Sections	Op Time	Score	Club
AC6ZM			420	85	14	71,400	TCG
AF4T			210	76	10.72	31,920	TCG
NS4X			155	83	4	25,730	TCG

**SO Unlimited Limited-Ant HP**

Call	OpMode	Remote	QSOs	Sections	Op Time	Score	Club
AC6ZM			420	85	14	71,400	TCG
AF4T			210	76	10.72	31,920	TCG

**SO Unlimited LP**

Call	OpMode	Remote	QSOs	Sections	Op Time	Score	Club
N9TF			235	73	9:30	34,310	TCG

**SO Unlimited Limited-Ant LP**

Call	OpMode	Remote	QSOs	Sections	Op Time	Score	Club
N9TF			235	73	9:30	34,310	TCG



## LZ DX Contest 2024 Nov 16

### SO CW HP

Call	OpMode	Remote	CW	Qs	Ph	Qs	Mults	Op	Time	Score	Club
K3IE	SO2R			383	0	94	5			137,616	TCG
AD4EB				169	0	47	2.5			26,743	TCG
N8UM				119	0	31	2			14,134	TCG
AC6ZM				83	0	39	2:15			13,689	TCG
W6UB				66	0	10	3.3			7,380	TCG
AA4DD				62	0	4	2			2,600	TCG

### SO SSB LP

Call	OpMode	Remote	CW	Qs	Ph	Qs	Mults	Op	Time	Score	Club
WN8Y				0	14	2	2			567	TCG

### SOSB/40 LP

Call	OpMode	Remote	CW	Qs	Ph	Qs	Mults	Op	Time	Score	Club
AC4G				39	0	7	1.5			2,100	TCG

## CQ Worldwide DX Contest, CW 2024 Nov 23

### SO(A)AB HP

Call	OpMode	Remote	QSOs	Zones	Countries	Op	Time	Score	Club
K3IE			2380	161	544	36		4,740,995	TCG
AD4EB			1500	143	458	16		2,516,387	TCG
N8UM			1522	118	375			2,158,354	TCG
NS4X			1130	110	332	15		1,433,406	TCG
W3TB			909	102	291	24:05		1,016,298	TCG
WM4Q			371	113	317	13:40		431,720	TCG
K3FH			245	38	129	4.5		117,902	TCG
W4UT			63	30	44	2		13,024	TCG

### SO(A)AB LP

Call	OpMode	Remote	QSOs	Zones	Countries	Op	Time	Score	Club
WV4AM		x	1041	90	269	19		1,059,050	TCG
W4CMG			540	77	203	19:40		325,640	TCG
N9TF			437	71	180	15		311,742	TCG
KQ4E			216	49	103	4		73,872	TCG
K4DXV			96	34	72			28,620	TCG

### SO(A)AB Youth LP

Call	OpMode	Remote	QSOs	Zones	Countries	Op	Time	Score	Club
WV4AM		x	1041	90	269	19		1,059,050	TCG

### SOAB HP

Call	OpMode	Remote	QSOs	Zones	Countries	Op	Time	Score	Club
K0EJ	SO2R		3681	148	441	42		6,172,131	TCG
K1GU			1464	106	300	23.9		1,713,120	TCG
AC4G			856	101	320	23		1,051,658	TCG
AF4T			489	98	232	16.97		443,850	TCG
W6UB			181	38	83	7.4		63,646	TCG
K9QJS			31	21	26	2		4,371	TCG

### SOAB Classic HP

Call	OpMode	Remote	QSOs	Zones	Countries	Op	Time	Score	Club
K1GU			1464	106	300	23.9		1,713,120	TCG
AC4G			856	101	320	23		1,051,658	TCG
AF4T			489	98	232	16.97		443,850	TCG

### SOAB LP

Call	OpMode	Remote	QSOs	Zones	Countries	Op	Time	Score	Club
K4KYN			225	49	141	7.5		119,424	TCG
WD4CFN			170	45	114	4:55		77,751	TCG
KT4RH			71	37	46	5		15,106	TCG

### SOAB Classic LP

Call	OpMode	Remote	QSOs	Zones	Countries	Op	Time	Score	Club
K4KYN			225	49	141	7.5		119,424	TCG

### SOSB10 LP

Call	OpMode	Remote	QSOs	Zones	Countries	Op	Time	Score	Club
K4AMC			258	24	74	10:17		73,108	TCG

### SOSB15 HP

Call	OpMode	Remote	QSOs	Zones	Countries	Op	Time	Score	Club
W9SN	SO2R		1315	36	131	31		589,535	TCG

Note: Does not include M/x scores

Didn't see your score listed? Next time, make sure to submit your score summary to 3830scores.com, and use the pull-down menu under "Club" to select "Tennessee Contest Group." Of course, it's also important to make sure that the Cabrillo file that you submit to the contest sponsor also contains the following line: *CLUB: Tennessee Contest Group*. This will ensure that your score will contribute to the TCG club aggregate score.

### Need some cheese for that wine?

Mark K0EJ took first place for the 18-hour Time Challenge in the California QSO Party this year. The contest organizers sent him a gift box of high-end cheeses from Point Reyes Farmstead Cheese Company.

That's some good stuff!



— • • • —

## **WB4YDL – Jamie Hall**

I've been asked to give a history of my ham radio avocation. I guess I would have to go back to my high school years in Memphis while attending Memphis University School (MUS), which is a private boys school where I resided about a mile away. There were two teachers then in the early '70's that were ham radio licensed—my Algebra 1 teacher Ray "Radio Ray" McGee WA4LAZ (SK) and Evin Perdue (call sign forgotten), my Algebra 2 teacher. They got together and started a school ham radio club where, after school hours, we could get together and learn Morse Code, radio theory, and what was required to obtain a ham radio license. It also helped that my 1st cousin, who graduated MUS a few years before me, was also a ham at that time. A station was set up in the back of the chemistry lab that had various receiver/transmitter combinations with names like Hammarlund, Hallicrafters, Lafayette, Johnson and Heathkit. One fellow had built a "Hot Water" HW-101 transceiver! An all-in-one box that didn't need an external antenna relay! These were wondrous times and I was hooked! I was familiar with Morse Code from my Boy Scout days, so getting up to 5 wpm and then 7 1/2 wpm while listening to the ARRL code practice sessions was pretty easy. Soon I was ready to attempt the Novice Class test...and soon I was WN4YDL! So now I had a license but no station...at least not at home. My parents let me stay after school for an hour on certain days so I could get some radio time in. I would also come in a bit early to catch some DX. Mr. Perdue gave me a couple flameproof straight keys he found in a drawer which he saved from his time in the Army Air Force. I gave one away many years ago, but recently I restored the one I saved. Santa came that year bearing an extremely nice Drake R-4B receiver with a 2-NT transmitter. The antenna was a 40M dipole strung across our roof and also used for 15M. I also discovered Memphis Amateur Supply. Mr. Robillio was wonderful and of course it was a candy store for me! His twin sons, Bill and Chris, were grade school classmates.

The General Class license was considerably tougher for me. My code speed I had gotten up to around 15 wpm, so that wasn't the problem. The written test, which was taken at the FCC office in Memphis, was filled with more advanced math and schematics, etc. It was also nerve wracking as I was a new driver and the room was filled with, um...older men! You had to draw schematics of things like Colpitts oscillators, block diagram of a superhet receiver, and calculate resonant frequencies! Slide rule was the way back then. I flunked twice before finally passing the written with a few months to spare on my 2-year Novice Class limit. And I became WB4YDL. And the VFO finally came in the form of the Drake T-4XB transmitter. Antennas also improved in the form of a 200-foot-long wire. In 1976, we celebrated our nation's bicentennial, and I was AB4YDL for that year. The 13-cent stamp had the Liberty Bell on it and I had QSL cards made with that image. I was able to attain Bicentennial Worked All States and that award is still proudly displayed today.

The late '70's and 1980's were extremely busy for me and ham radio had to be put on the back burner. I was burning a lot of midnight oil while in college studying the sciences and math and then grad school where I earned a MS degree in Biophysics. I stayed home to go to medical school at UT Memphis. Medical training was fast and furious with little sleep. I was an intern at Marshall University, then back to Memphis for Internal Medicine residency at Baptist Hospital downtown (no longer exists), and then down to New Orleans at Tulane University for Cardiology Fellowship. During this time, I met a wonderful nurse, June, who worked in the Medical ICU at Baptist Central. We married while I was still finishing internship...broke! Once back in Memphis for residency, I was moonlighting as an ER doc, training during the day, and she was nursing. Then kids came...Needless to say, there was no time for ham radio at that time. I did manage to carve some time to take and pass my Advanced Class and then my Extra Class license exams. I was astonished to discover that the code exam, where I was used to copying one solid minute, was now fill in the blank questions. Piece of cake!

I was still keeping track of what was going on in the ham radio world and of course everything was changing. Ham radios became smaller and solid state. I finally bought my first SS ham radio, the Kenwood

TS-440S. I also started to get into 2M/440 FM a bit in the mobile, and joined the ham radio club in Metairie, LA. They had a great Field Day operation which I was proud to be a part. I also participated in Field Day as a 2B operation on the beach at Bay St. Louis. I don't think I've ever been hotter!

After all of that, and now a newly minted practicing cardiologist, we packed up and moved back to Tennessee. By this time, we had two red-headed boys, Patrick and Jamie Jr., and daughter Caitlin was on the way! We spent two years in Jackson before taking an offer to start a heart program in Union City. After renting a house for 7 years, I bought 30 acres in western Obion County and built our home. I discovered the Reelfoot Amateur Radio Club and was president for a few years. I also helped get the Ides of March hamfest going at the time. I've made tons of friends and acquaintances during the last 30 years here, some are SK. Locally, there is Steve KQ4UB, Glenn N4MJ, Harrell WD4LAR and now my son Patrick is KO4HEX.

Ham radio for me has evolved a bit. I was heavily involved with ARES leadership for 20 years and was Assistant SEC for West TN for a time. DX'ing has been my first love, but I added contesting really after the great ice storm of 2009. Billy AA4NU was actually quite helpful in getting my antenna situation rebuilt as I lost my 1st tower and all antennas to that storm. Now I have two towers - one 120-foot R45 tower with a rebuilt (smaller) F12 MAG 620/340 at 60 feet and the bigger one at 120 feet. The 72 foot crank up tower was repaired and I have a stack of F12 XR-5 beams at 37 & 72 feet with VHF antennas above that. I have a dedicated shack now above our garage where I have advanced to Elecraft radios - K4D and K3S and accompanying amplifiers. I caught the RTTY bug and can now go SO2R with it. And when I'm in the groove, I can occasionally win something!





Satellite communication has also fascinated me, and with Jamie Jr's help, we were waving an Arrow antenna around with an HT in the back of a pickup truck talking to folks on the old Sunsat SO-35! This has now advanced to 2M EME activity. I'm thinking about 1.2 GHz at some point, but I have to get that dish past the XYL!

As I approach retirement in the next handful of years, I have returned to roots of sorts with restoration of "boat anchors", teaching electronics for our club, and getting out with Patrick KO4HEX, who has given me the POTA bug! I now have 3 grandchildren, and the two families have decided to stay close to Moma's cooking and reside in the Union City area. I'm hoping in retirement I'll have more time for contesting and getting my code speed back up. As for DX, I lack P5 and EZ to have worked them all, have 8 band DXCC, needing a few on 160M and more on 6M, and need 2 more for all 200 zones for 5BWAZ. So far, ham radio has been quite a ride!

— • • • —

### DUES & MEMBERSHIP & NEW MEMBERS

No new members in November. If current members would like to nominate new members, please e-mail KOEJ (mark.speck.k0ej@gmail.com) so an invite can be sent out.

Are you up-do-date with your dues? Do you need help navigating the HamClubOnline? Pop us a message via the Google Group (<https://groups.google.com/u/1/g/tcg1>) and we can assist!

TCG membership is open to all with an interest in contesting. There are no geographical limitations. All you need is a sincere interest in contesting, and the willingness to get on the air and operate with us.

— • • • —

### UPCOMING CONTESTS

The following table is a list of the upcoming contests which qualify for the TCG Most Radioactive Award. For more information on the MRA, please refer to K4TCG.ORG under the TCG INFO section. Thanks to AD4EB for this list, and to Ted W4NZ for administering the TCG Most Radioactive Award.

December 6, 2024	ARRL 160-Meter Contest
December 7, 2024	FT Roundup
December 14, 2024	ARRL 10-Meter Contest
December 21, 2024	OK DX RTTY Contest
December 28, 2024	RAC Winter Contest – Dec
December 28, 2024	Stew Perry Topband Challenge-Dec
January 4, 2025	ARRL RTTY Roundup
January 11, 2025	North American QSO Party, CW Jan
January 18, 2025	ARRL January VHF Contest
January 18, 2025	Hungarian DX Contest
January 18, 2025	North American QSO Party, SSB Jan
January 24, 2025	CQ 160-Meter Contest, CW
January 25, 2025	BARTG RTTY Sprint

— • • • —

## ARRL TEN METER PROPAGATION MODELS

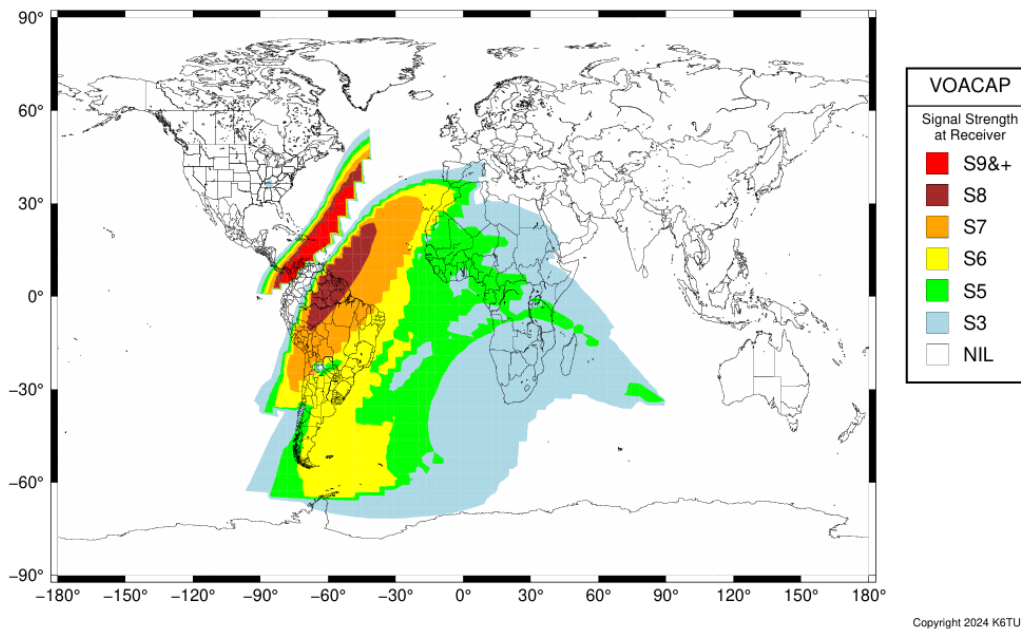
These models are assuming a sunspot number of 123, Station profile using tri-banders at both ends. These models are for short-path only.

Keep in mind that there could also be Sporadic E (Es) propagation at any hour, which is great for working close-in states. It's also NOT great since Es can shorten skip to DX locations. Ahh... 10 meters! Watch also for long-path propagation before and right at daybreak to Asia. Unfortunately, the solar flux has been somewhat low--and predicted to stay that way--compared to other contests this season. Still, SFI of 180 is still great and will generate plenty of DX opportunities. Remember, states in US, Mexico, and provinces in Canada, are also multipliers.

Not much typically happens between 0200 through 1100UTC, but you never know! It's a good idea beam over the North Pole at our local midnight to check the bands. It's 10 meters at the peak of the cycle, you might get a surprise!

10M: 13 utc Jan 123ssn

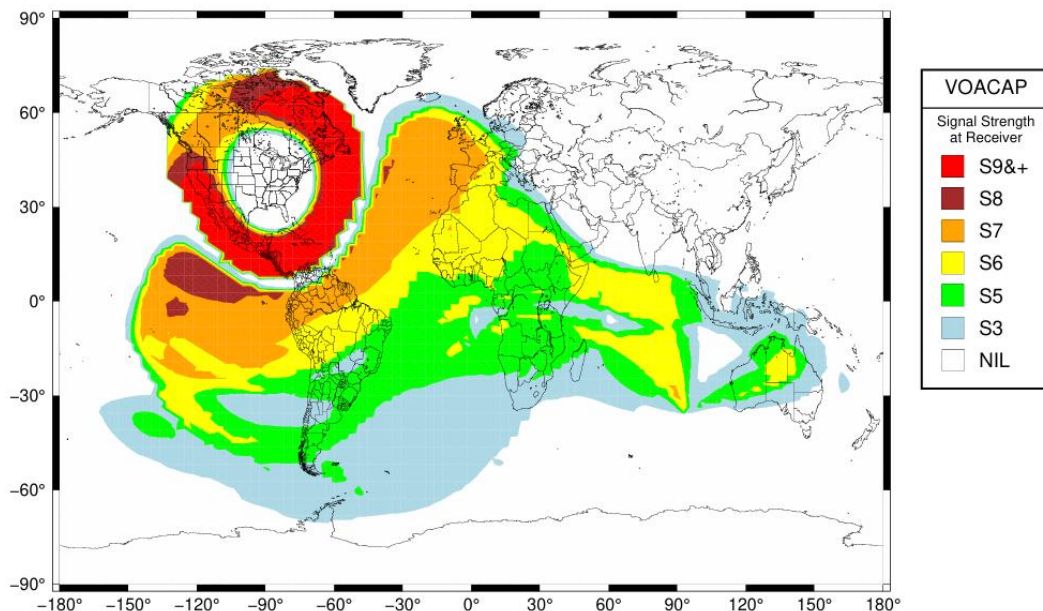
Prepared for: WF7T



At sun-up, I will be pointed SE. Carribean, South America, and somewhat weak African paths should all be viable. Europe will open up very soon after, and should be the main source of QSOs and international multipliers.

10M: 16 utc Jan 123ssn

Prepared for: WF7T

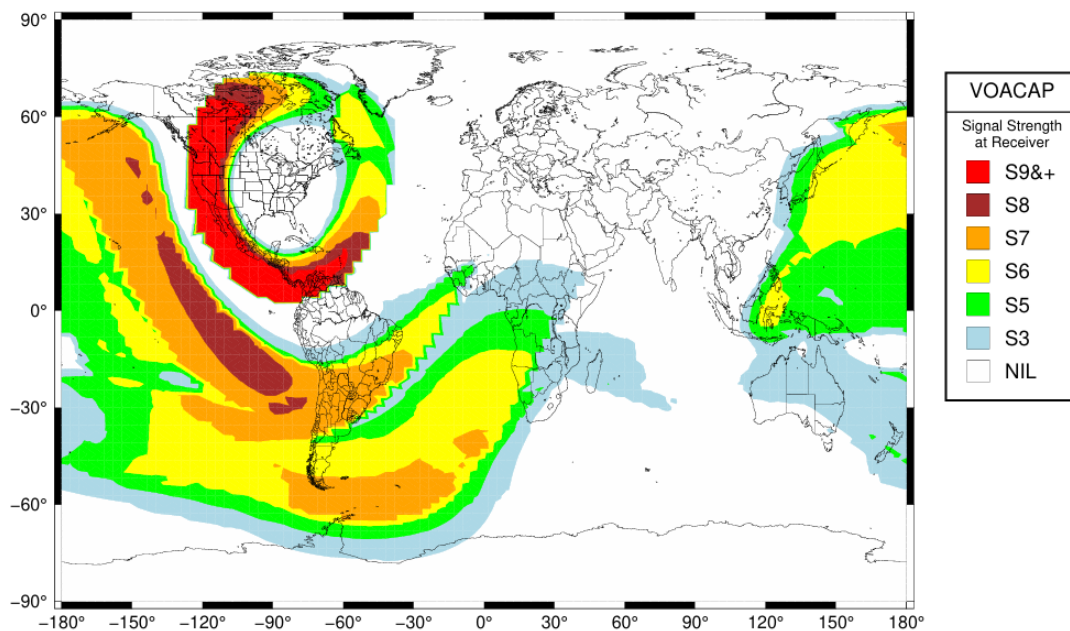


Copyright 2024 K6TU

EU is in full swing at 1600UTC but will start falling away by 1800UTC. Southerly paths will be in effect throughout the day. Also, North American paths are predicted to be very strong and will likely stay that way through the day.

10M: 23 utc Jan 123ssn

Prepared for: WF7T

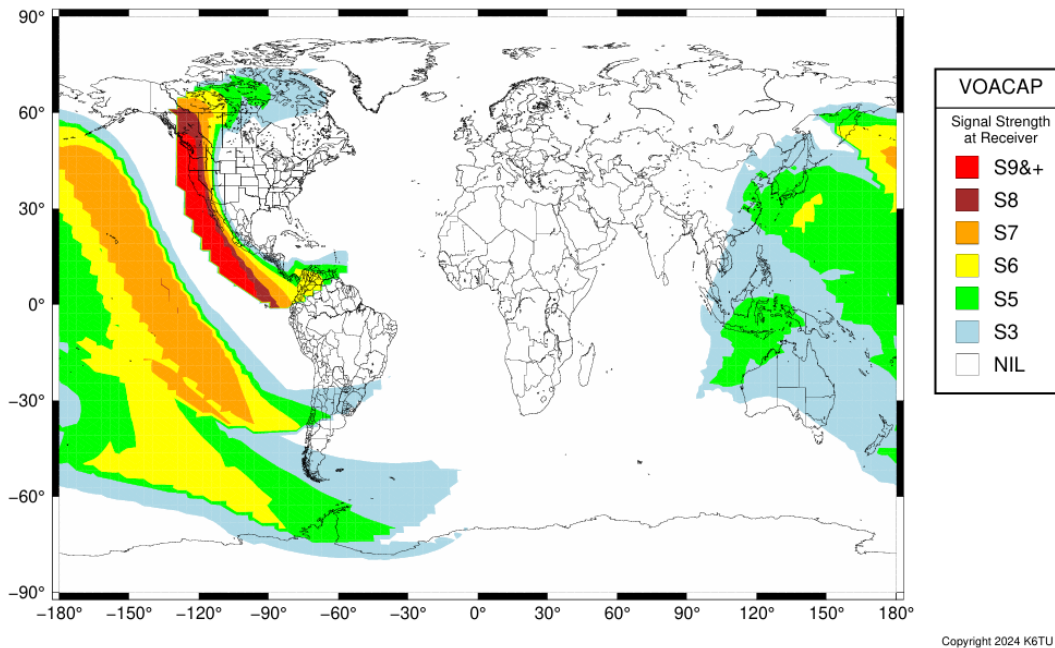


Copyright 2024 K6TU

Asia short-path start around 2200UTC and stay viable until the band closes. At 2300UTC notice how the terminator makes a very clear diagonal through the Atlantic, with the enhancements predicted to the West and Northwest.

10M: 00 utc Jan 123ssn

Prepared for: WF7T



The action stays toward JA, South Pacific, and ZL/VK until the band closes around 0100UTC. Stateside opportunities, except for the west coast, are minimal. That said, sporadic E could provide lots of interesting short-skip contacts IF it appears. Likewise, listen occasionally toward strange paths, and over the pole. Point the antenna Southwest at night to see if there is anything weird and wonderful going on.

The visualizations above are provided by K6TU's Propagation as a Service. I subscribe to K6TU's service to help me understand the 'art of the possible' when preparing for a contest. Stu's website and service have been wonderfully valuable to me. A 30-day trial subscription is offered, and I encourage folks to kick the tires for yourself: [K6TU.NET Propagation As A Service | Propagation Services for Contesters & DX'ers](https://paas.k6tu.net/) (https://paas.k6tu.net/).

Keep in mind that if you have bigger antennas and more power, that the propagation possibilities can be different. That said, dipoles and barefoot should produce plenty of fun in this contest. As Billy NU stated, "... Run what ya have to just have FUN, and have FUN by just running what ya have!"

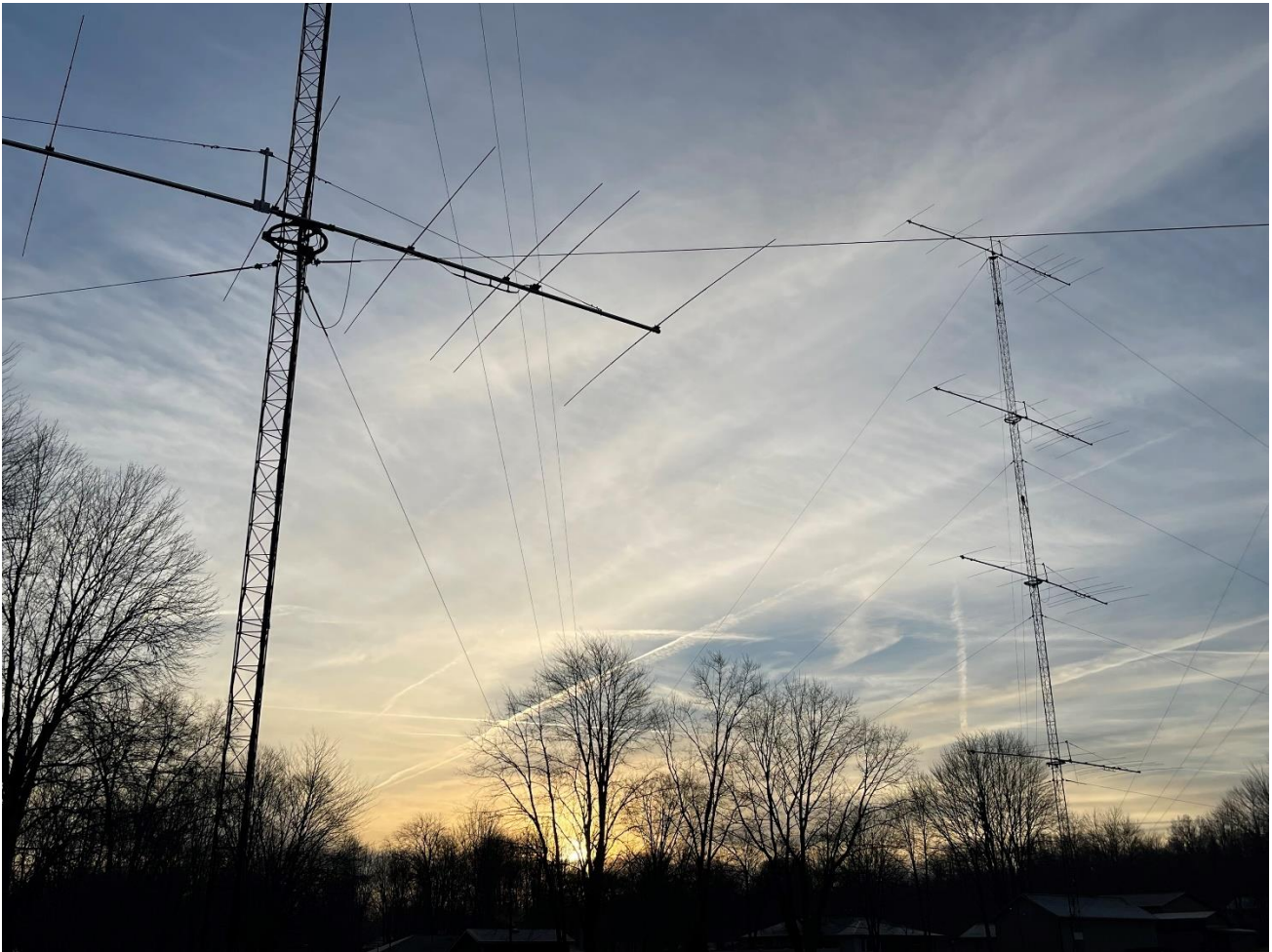
Also, have fun in ARRL 160, FT Round-up, RAC Winter Contest, and the Big Stew Perry Top Band Distance Challenge.

I wish you, your family and friends much peace and joy in the upcoming holidays. Stay happy and healthy, and I hope to put you in my log soon!

73 Brad WF7T



And now, here's your Antenna Moment of Zen



(Picture: WF7T @ K3LR)

