

News and Events, May 2026 Edition

FROM THE PRESIDENT'S DESK

The Tennessee Contest Group has been **very active** this month, and the numbers show it. So far this month, TCG members have posted:

8,378,062 total score

17,076 QSOs

484.2 hours on the air

299 score posts

35 operators

63 contests

That is a pile of radio activity, and it is exactly the kind of thing I love to see. Whether you are running a big station, a wire in a tree, mobile, portable, part time, full time, CW, SSB, RTTY, FT8, QRP, or whatever else gets you on the air, it all counts. Every score post helps show that TCG is alive and active.

Online Scoreboard use is also up, and it is really helping TCG representation. We are starting to look like the competitive club we are. Thank you to everyone who has taken the time to get on the scoreboard and support the club. It matters, and it shows.

One thing that really jumps out from the 3830 tracker is that TCG activity has not just been “a few people posting scores.” We are showing up all over the place. AD4EB and Melody KI4HVY put in a monster road-warrior effort in the Florida QSO Party, posting over **1 million points** from the mobile, and that came just a couple weeks after another big AD4EB rover effort in the Georgia QSO Party. AC6ZM also had a huge Georgia QSO Party rover score, and a pile of TCG calls showed up in both GAQP and FQP. That is exactly the kind of club activity that gets noticed.

We also had strong DX and RTTY activity, with NR4L putting up a big **CQMM DX** score and WV4P, W4SDX, DM4KW, AA4CS, WN8Y and others showing up in **SPDX RTTY**. The weekly stuff matters too — the CWT, WRT, NCCC Sprint, KRC SST and other shorter events keep TCG visible all month long. Those posts may not always be monster scores, but they absolutely matter. Every one of them helps show that TCG is active, competitive, and on the air.

Dayton is just around the corner. For anyone going for the first time, thinking about going, or trying to figure out what to expect, feel free to ask questions on the email reflector. There are plenty of folks in the club who have been many times and can help with advice on travel, parking, tickets, hotels, flea market strategy, the contest dinner, or just how to survive the whole thing without going broke.

We are also planning a couple of TCG meet-and-greet opportunities at Dayton. Juan and Cathy are working out the details on times and locations. I hope to see a pile of y'all up there. Speaking of Dayton, we currently have **one seat left** for the Contest Dinner. If someone needs it, let us know. There is always demand at the door, so do not feel compelled, but the seat is available if a TCG member needs one.

There are several contests in May, including the **7th Area QSO Party**, which is always a big hit. After Dayton, we roll right into **CQ WPX CW**, and that is a big one. If you have plans for WPX CW, whether it is a serious effort, a part-time effort, a multi-op, a new antenna test, or just seeing how much noise you can make, let's hear about it on the reflector.

I also want to give everyone an update on the **MRA / Most Radio Active** program. Based on feedback, I am considering replacing MRA with more of a **personal achievement awards** type program. The idea is to better represent the majority of TCG operators and make it less of an internal arms race. I would like this to be something that encourages activity, rewards individual accomplishments, and helps us help each other succeed. I will present a draft of the proposed program and create a poll so the members can vote on it. MRA will, at the very least, continue through the remainder of this year. If the new program gets enough support, it may run concurrently so we can work out the bugs before making a full-year run in 2027.

The plan to resurrect the TCG Zoom presentations is also moving forward. I would love to hear feedback and ideas for subjects you would like to see presented. Station building, contest strategy, logging software, RTTY, CW, SO2R, antennas, propagation, QSO parties, online scoreboards, radios, amplifiers, grounding, whatever would help the club. Please send ideas to the reflector and help us shape this into something useful.

With Ted's help, we are also getting the remaining bugs worked out on tcgscores.com, and I am adding new features as time allows. The site is already helping us see just how active TCG really is, and I think it is going to become an even better tool for the club. TCG is active, the bands are busy, Dayton is coming, WPX CW is coming, and there is a lot going on. Keep getting on the air, keep posting your scores, keep helping each other, and keep making noise.

Hope to see many of y'all at Dayton.

73,
Ron, WV4P
President, Tennessee Contest Group

— • • • —

CONTEST ACTIVITY: Here is a selected list, as of this publication, of those who put up scores on [3830 Scores Summary](#) in April:

EA RTTY Contest

SOAB HP

Call	OpMode	Remote	QSOs	Mults	Op Time	Score	Club
AA4DD			132	83	6	11,952	TCG
WV4P	2BSIQ	x	74	68	3	6,800	TCG
WN8Y			52	18	5	1,610	TCG
W4SDX			23	16	.5	368	TCG
NR4L		x	13	14	1	182	TCG
AD4EB			15	15	0.5	60	TCG

SOAB LP

Call	OpMode	Remote	QSOs	Mults	Op Time	Score	Club
K4HWS			9	6	.5	108	TCG

SP DX Contest

SOABCW HP

Call	OpMode	Remote	CW	Qs	Ph	Qs	Mults	Op Time	Score	Club
WV4P		x		18	0	8	3	432	TCG	
AD4EB				5	0	4	0.5	60	TCG	

SOABSSB HP

Call	OpMode	Remote	CW	Qs	Ph	Qs	Mults	Op Time	Score	Club
WN8Y				0	12	4	.5	48	TCG	

SOSB/15Mixed HP

Call	OpMode	Remote	CW	Qs	Ph	Qs	Mults	Op Time	Score	Club
K0EJ				2	3	4	1	60	TCG	

SOSB/40CW HP

Call	OpMode	Remote	CW	Qs	Ph	Qs	Mults	Op Time	Score	Club
NR4L				3	0	3	1	9	TCG	

Louisiana QSO Party

Fixed CW/Dig HP

Call	OpMode	Remote	CW-Dig	Qs	Ph	Qs	CW-Dig	Mults	Ph	Mults	Op Time	Score	Club
W4CMG				4	0	4	0	00:15			64	TCG	
WV4P		x		3	0	3	0	2			30	TCG	
K4DXV				1	0	1	0	00:01			4	TCG	

Fixed CW/Dig Wires HP

Call	OpMode	Remote	CW-Dig	Qs	Ph	Qs	CW-Dig	Mults	Ph	Mults	Op Time	Score	Club
K4DXV				1	0	1	0	00:01			4	TCG	

Fixed CW/Dig LP

Call	OpMode	Remote	CW-Dig	Qs	Ph	Qs	CW-Dig	Mults	Ph	Mults	Op Time	Score	Club
WM4Q				2	0	2	0	:10			116	TCG	

Fixed Mixed HP

Call	OpMode	Remote	CW-Dig	Qs	Ph	Qs	CW-Dig	Mults	Ph	Mults	Op Time	Score	Club
WA4WZR				3	3	3	3	1			208	TCG	
AD4EB				3	1	3	1	0.5			148	TCG	
NR4L		x		2	1	2	1	1			30	TCG	

Fixed Mixed LP

Call	OpMode	Remote	CW-Dig	Qs	Ph	Qs	CW-Dig	Mults	Ph	Mults	Op Time	Score	Club
W4NZ				9	3	8	3	2			562	TCG	
W4UT				7	5	6	4	1.5			480	TCG	

Fixed Mixed Wires LP

Call	OpMode	Remote	CW-Dig	Qs	Ph	Qs	CW-Dig	Mults	Ph	Mults	Op Time	Score	Club
W4UT				7	5	6	4	1.5			480	TCG	

Mississippi QSO Party

Multi-Op LP

Call	OpMode	Remote	CW	Qs	Ph	Qs	RTTY	Qs	FTn	Qs	Mults	Op Time	Score	Club
W4XK				86	123	0	93	63	14.4		30,303	TCG		

Single Op HP

Call	OpMode	Remote	CW	Qs	Ph	Qs	RTTY	Qs	FTn	Qs	Mults	Op Time	Score	Club
W4NZ				10	6	0	0	10	2		260	TCG		
WV4P		x		7	0	0	0	7	1		70	TCG		
W4CMG				6	0	0	0	4	00:30		48	TCG		
AD4EB				4	0	0	0	4	0.5		32	TCG		
NR4L		x		3	0	0	0	3	1		18	TCG		
K4DXV				0	3	0	0	3	00:16		9	TCG		

Single Op LP

Call	OpMode	Remote	CW	Qs	Ph	Qs	RTTY	Qs	FTn	Qs	Mults	Op Time	Score	Club
W4UT				15	7	0	0	15	2		555	TCG		
K4KYN				8	6	0	3	17	2.5		476	TCG		
K9QJS				3	0	0	0	3	.5		18	TCG		
WM4Q				3	0	0	0	3	:30		18	TCG		
W4SDX				0	0	0	17	0	1.25		1	TCG		

Missouri QSO Party

Mobile SO SSB LP

Call	OpMode	Remote	CW	Qs	Ph	Qs	Dig	Qs	Mults	Op Time	Score	Club
AD4EB				0	3	0	3	0.5			9	TCG

SO Fixed HP

Call	OpMode	Remote	CW	Qs	Ph	Qs	Dig	Qs	Mults	Op Time	Score	Club
NR4L		x		41	10	0	36	4	3,664	TCG		
W4CMG				30	0	0	20	1:15	1,200	TCG		
WV4P		x		13	3	0	15	2	435	TCG		

SO Fixed LP

Call	OpMode	Remote	CW	Qs	Ph	Qs	Dig	Qs	Mults	Op Time	Score	Club
WF7T				100	0	0	65		11,700	TCG		
W4NZ				33	0	0	25	1	1,600	TCG		
K4RO				24	0	0	21	1	1,008	TCG		
WA4JA				0	21	0	15	2	415	TCG		
KS4X				8	4	0	10	1	200	TCG		
AA4CS				8	4	0	9	1.1	171	TCG		
WM4Q				5	0	0	5	.5	50	TCG		

New Mexico QSO Party

Single Op HP

Call	OpMode	Remote	CW	Qs	Ph	Qs	Dig	Qs	Mults	Op Time	Score	Club
NR4L		x		10	2	0	10	2	220	TCG		
WV4P		x		9	0	0	8	1	144	TCG		
W4CMG				6	0	0	5	1	60	TCG		

Single Op LP

Call	OpMode	Remote	CW	Qs	Ph	Qs	Dig	Qs	Mults	Op Time	Score	Club
AA4CS				14	0	0	11	.5	616	TCG		
WA4JA				0	5	0	4	.5	540	TCG		
K4KYN				9	0	0	20	1	180	TCG		
AD4EB				5	2	0	7	0.5	168	TCG		
KS4X				0	5	0	5	1	50	TCG		
W4NZ				5	0	0	4	1	40	TCG		
WM4Q				2	0	0	2	.5	16	TCG		



Georgia QSO Party

M/S LP

Call	OpMode	Remote	CW	Qs	Ph	Qs	CW	Mults	Ph	Mults	Op	Time	Score	Club
K4RO				16	0	32	0	0	0:20	448	TCG			

Rover Single OpCW LP

Call	OpMode	Remote	CW	Qs	Ph	Qs	CW	Mults	Ph	Mults	Op	Time	Score	Club
AD4EB				1397	0	42	0	11	117,348	TCG				

Rover Single OpMixed LP

Call	OpMode	Remote	CW	Qs	Ph	Qs	CW	Mults	Ph	Mults	Op	Time	Score	Club
AC6ZM				1613	78	44	12	18:41	185,024	TCG				

Single OpCW HP

Call	OpMode	Remote	CW	Qs	Ph	Qs	CW	Mults	Ph	Mults	Op	Time	Score	Club
W4NZ				91	0	56	0	9	10,192	TCG				
K1GU				91	0	53	0	6.1	9,646	TCG				
AA4DD				54	0	34	0	5	3,672	TCG				
W4CMG				24	0	17	0	1:31	816	TCG				

Single OpCW LP

Call	OpMode	Remote	CW	Qs	Ph	Qs	CW	Mults	Ph	Mults	Op	Time	Score	Club
K4KYN				33	0	21	0	3	1,386	TCG				
W4UT				22	0	18	0	2	792	TCG				
AC4G				19	0	13	0	1	494	TCG				
WM4Q				6	0	6	0	.5	72	TCG				

Single OpMixed HP

Call	OpMode	Remote	CW	Qs	Ph	Qs	CW	Mults	Ph	Mults	Op	Time	Score	Club
NR4L		x		41	9	31	8	5	3,783	TCG				
WV4P		x		18	7	15	5	3	860	TCG				
KT0W(@W0SD)				11	1	9	1		210	TCG				

Single OpMixed LP

Call	OpMode	Remote	CW	Qs	Ph	Qs	CW	Mults	Ph	Mults	Op	Time	Score	Club
W4SSF				38	18	30	13	4:15	4,042	TCG				
K0EJ				31	4	20	4	2	1,584	TCG				
KS4X				9	21	9	14	1.5	897	TCG				
AA4CS				5	5	3	3	.5	84	TCG				

Single OpSSB LP

Call	OpMode	Remote	CW	Qs	Ph	Qs	CW	Mults	Ph	Mults	Op	Time	Score	Club
WA4JA				0	39	0	24	4	936	TCG				

IG-RY WW RTTY Contest

Single Op HP

Call	OpMode	Remote	QSOs	Mults	Op	Time	Score	Club
WV4P	2BSIQ	x	655	229	19	149,995	TCG	
NR4L		x	266	154	12	40,964	TCG	
W4SDX			88	77	3	6,776	TCG	
WN8Y			39	15	6.0	585	TCG	
AA4DD			14	14	1	196	TCG	

Single Op LP

Call	OpMode	Remote	QSOs	Mults	Op	Time	Score	Club
K4HWS			215	136	12	29,240	TCG	
AA4CS			100	77	5.25	7,700	TCG	
AD4EB			5	5	0.5	25	TCG	

North Dakota QSO Party

Fixed HP

Call	OpMode	Remote	CW	Qs	Ph	Qs	Dig	Qs	Mults	Op	Time	Score	Club
WV4P		x		2	2	1	5	2	25	TCG			
NR4L		x		2	3	0	4	1	20	TCG			
W4CMG				2	0	0	2		4	TCG			

Fixed LP

Call	OpMode	Remote	CW	Qs	Ph	Qs	Dig	Qs	Mults	Op	Time	Score	Club
AA4CS				2	0	1	2	.1	6	TCG			

Out of State LP

Call	OpMode	Remote	CW	Qs	Ph	Qs	Dig	Qs	Mults	Op	Time	Score	Club
KS4X				0	1	0	1	1	1	TCG			

CQMM DX Contest

SOAB HP

Call	OpMode	Remote	QSOs	Prefixes	Countries	Op	Time	Score	Club
K0EJ	SO2R		533	89	64	9	412,335	TCG	
WV4P		x	120	53	56	7	78,153	TCG	
WA4WZR			151	44	43	7:30	71,775	TCG	
NS4X			68	26	30	2	18,368	TCG	

SOAB LP

Call	OpMode	Remote	QSOs	Prefixes	Countries	Op	Time	Score	Club
W9WI			62	18	19	3	10,471	TCG	
WM4Q			35	24	18		8,274	TCG	
AD4EB/M			30	1	8	1.5	963	TCG	
K4KYN			14	14	11	.5	196	TCG	

SOAB-YL HP

Call	OpMode	Remote	QSOs	Prefixes	Countries	Op	Time	Score	Club
NR4L		x	800	149	84	23	960,892	TCG	

SOAB-YL LP

Call	OpMode	Remote	QSOs	Prefixes	Countries	Op	Time	Score	Club
W4CMG		x	15	0	3	0.5	180	TCG	

SOSB/10 LP

Call	OpMode	Remote	QSOs	Prefixes	Countries	Op	Time	Score	Club
AC4G			23	18	5	1	3,197	TCG	

SOSB/15 HP

Call	OpMode	Remote	QSOs	Prefixes	Countries	Op	Time	Score	Club
W4NZ			20	2	14	1	1,040	TCG	

SOSB/20 HP

Call	OpMode	Remote	QSOs	Prefixes	Countries	Op	Time	Score	Club
K4DXV			4	4	4	00:15	182	TCG	

Michigan QSO Party

Single Op HP

Call	OpMode	Remote	CW	Qs	Ph	Qs	CW	Mults	Ph	Mults	Op	Time	Score	Club
WV4P				98	0	37	0	6	7,252	TCG				
WA4WZR				18	0	13	0	1:00	468	TCG				
NR4L		x		12	0	12	0	1	288	TCG				

Single Op LP

Call	OpMode	Remote	CW	Qs	Ph	Qs	CW	Mults	Ph	Mults	Op	Time	Score	Club
W3TB				24	0	17	0	0:54	816	TCG				
WM4Q				17	0	17	0		578	TCG				
K4KYN				17	0	16	0	1.5	544	TCG				
AA4CS				9	7	9	6	.75	375	TCG				
W4NZ				17	0	11	0	1	374	TCG				
AC4G				12	0	9	0	1	216	TCG				
WA4JA				0	12	0	10	2.5	120	TCG				
AD4EB/M				4	0	4	0	0.5	32	TCG				
W4CMG		x		3	0	2	0	00:15	12	TCG				

SPDX RTTY Contest

SOAB HP

Call	OpMode	Remote	QSOs	Mults	Continents	Op	Time	Score	Club
WV4P	2BSIQ	x	544	208	6	20	4,936,476	TCG	
AA4DD			127	59	5	6	206,010	TCG	
W4SDX			107	36	6	3.5	175,392	TCG	
WN8Y			54	331	3	5	28,797	TCG	
NR4L		x	19	16	5	1	10,320	TCG	

SOAB LP

Call	OpMode	Remote	QSOs	Mults	Continents	Op	Time	Score	Club
DM4KW			211	53	3	11:55	284,016	TCG	
AA4CS			79	29	5	4	54,240	TCG	
K4HWS			13	7	3	.5	1,512	TCG	

Florida QSO Party

Cnty ExpedCW QRP

Call	OpMode	Remote	CW	Qs	Ph	Qs	CW	Mults	Ph	Mults	Op	Time	Score	Club
KØEJ/ESC				36	0			23	0		1		3,312	TCG

SO MobileCW LP

Call	OpMode	Remote	CW	Qs	Ph	Qs	CW	Mults	Ph	Mults	Op	Time	Score	Club
AD4EB				3623	0			74	0		20		1,072,408	TCG

SOAB(A)CW HP

Call	OpMode	Remote	CW	Qs	Ph	Qs	CW	Mults	Ph	Mults	Op	Time	Score	Club
N6NT				104	0			42	0		5:15		8,736	TCG
W4CMG				47	0			32	0		1:5		3,008	TCG
NR4L		x		50	0			27	0		2		2,700	TCG
WV4P				36	0			29	0		2		2,088	TCG

SOAB(A)CW LP

Call	OpMode	Remote	CW	Qs	Ph	Qs	CW	Mults	Ph	Mults	Op	Time	Score	Club
K1GU				107	0			48	0		3.7		20,544	TCG
W4SSF				62	0			32	0		3:00		7,936	TCG
K4AMC				51	0			33	0		1:59		6,732	TCG

SOAB(A)Mixed HP

Call	OpMode	Remote	CW	Qs	Ph	Qs	CW	Mults	Ph	Mults	Op	Time	Score	Club
W4NZ				159	12			56	11		6		22,110	TCG

SOAB(A)Mixed LP

Call	OpMode	Remote	CW	Qs	Ph	Qs	CW	Mults	Ph	Mults	Op	Time	Score	Club
AA4CS				57	14			29	12		3.0		10,824	TCG

SOAB(A)SSB HP

Call	OpMode	Remote	CW	Qs	Ph	Qs	CW	Mults	Ph	Mults	Op	Time	Score	Club
WN8Y				0	24			0	17		2		408	TCG

SOABCW LP

Call	OpMode	Remote	CW	Qs	Ph	Qs	CW	Mults	Ph	Mults	Op	Time	Score	Club
K4KYN				69	0			32	0		5		8,832	TCG
W3TB				37	9			24	0		1:17		3,552	TCG
K4KO				7	0			6	0		0.5		168	TCG

SOABCW QRP

Call	OpMode	Remote	CW	Qs	Ph	Qs	CW	Mults	Ph	Mults	Op	Time	Score	Club
KØEJ/4				12	0			10	0		1		480	TCG

SOABMixed HP

Call	OpMode	Remote	CW	Qs	Ph	Qs	CW	Mults	Ph	Mults	Op	Time	Score	Club
W4UT				79	2			33	2		4		11,200	TCG
WA4WZR				34	5			20	5		1		1,825	TCG

SOABSSB HP

Call	OpMode	Remote	CW	Qs	Ph	Qs	CW	Mults	Ph	Mults	Op	Time	Score	Club
W4SDX				0	18			0	11		.5		198	TCG

SOABSSB LP

Call	OpMode	Remote	CW	Qs	Ph	Qs	CW	Mults	Ph	Mults	Op	Time	Score	Club
WA4JA				0	12			0	12		1.5		288	TCG

SOABSSB QRP

Call	OpMode	Remote	CW	Qs	Ph	Qs	CW	Mults	Ph	Mults	Op	Time	Score	Club
KS4X				0	9			0	7		1		189	TCG

BARTG Sprint 75

Single Op HP

Call	OpMode	Remote	QSOs	Mults	Continents	Op	Time	Score	Club
NR4L		x	15	11		2	1	330	TCG
W4SDX			10	9		2	.5	180	TCG

Single Op LP

Call	OpMode	Remote	QSOs	Mults	Continents	Op	Time	Score	Club
K4HWS			12	6		2	.5	240	TCG
AA4CS			8	6		2	.3	96	TCG

SO Expert HP

Call	OpMode	Remote	QSOs	Mults	Continents	Op	Time	Score	Club
WV4P		x	39	24		3	2	2,457	TCG

Ontario QSO Party

SO CW HP

Call	OpMode	Remote	CW	Qs	Ph	Qs	Mults	Op	Time	Score	Club
WV4P		x		87	0		0	8		12,840	TCG
NS4X				6	0		6	0.5		72	TCG
NR4L		x		4	0		4	1		32	TCG

SO CW LP

Call	OpMode	Remote	CW	Qs	Ph	Qs	Mults	Op	Time	Score	Club
K4KYN				25	0		20	2		1,400	TCG
WM4Q				19	0		19			874	TCG
W3TB				10	0		0	0:33		324	TCG
W4NZ				7	0		6	1		84	TCG
AD4EB/M				4	0		4	0.5		32	TCG

SO Mixed LP

Call	OpMode	Remote	CW	Qs	Ph	Qs	Mults	Op	Time	Score	Club
AA4CS				11	2		13	.5		338	TCG

SO SSB LP

Call	OpMode	Remote	CW	Qs	Ph	Qs	Mults	Op	Time	Score	Club
WN8Y				0	10		3	1		54	TCG
WA4JA				0	5		5	.5		25	TCG
W4SDX				0	3		3	.1		18	TCG

Nebraska QSO Party

Fixed HP

Call	OpMode	Remote	CW	Qs	Ph	Qs	Dig	Qs	FT8	Qs	Mults	FTn	Mults	Op	Time	Score	Club
W4CMG				3	0		0	0	0	2		0				12	TCG

Fixed LP

Call	OpMode	Remote	CW	Qs	Ph	Qs	Dig	Qs	FT8	Qs	Mults	FTn	Mults	Op	Time	Score	Club
W4UT				4	0		0	0	0	3		0	00:16		24	TCG	
W4NZ				4	0		0	0	0	3		0	1		24	TCG	
K4KYN				3	0		0	0	0	6		0	.5		18	TCG	

Out of State HP

Call	OpMode	Remote	CW	Qs	Ph	Qs	Dig	Qs	FT8	Qs	Mults	FTn	Mults	Op	Time	Score	Club
NR4L		x		5	0		0	0	0	3		0	1		30	TCG	
WV4P				3	0		0	0	0	3		0	1		18	TCG	

Out of State LP

Call	OpMode	Remote	CW	Qs	Ph	Qs	Dig	Qs	FT8	Qs	Mults	FTn	Mults	Op	Time	Score	Club
AA4CS				5	1		0	0	0	5		0	1		110	TCG	

Quebec QSO Party

SO CW HP

Call	OpMode	Remote	CW	Qs	Ph	Qs	Mults	Op	Time	Score	Club
WV4P		x		6	0		4	2		58	TCG
NR4L		x		5	0		3	1		30	TCG

SO CW LP

Call	OpMode	Remote	CW	Qs	Ph	Qs	Mults	Op	Time	Score	Club
WM4Q				4	0		4			42	TCG
K4KYN				5	0		3	.5		30	TCG
AD4EB/M				3	0		3	1.5		18	TCG

SO Mixed LP

Call	OpMode	Remote	CW	Qs	Ph	Qs	Mults	Op	Time	Score	Club
AA4CS				1	2		3	.5		12	TCG

Didn't see your score listed? Next time, make sure to submit your score summary to 3830scores.com, and use the pull-down menu under "Club" to select "Tennessee Contest Group." Of course, it's also important to make sure that the Cabrillo file that you submit to the contest sponsor also contains the following line: CLUB: Tennessee Contest Group. This will ensure that your score will contribute to the TCG club aggregate score.

RTTY Roundup – Our TGC Ops at the TOP

All 3 Multi op category winners in the RTTY Roundup included TCG ops or were TCG stations.

W/VE, Multioperator

Single Transmitter, High Power

 1. W0SD	Op TCG Member Nick, KT0W	261,214
2. N7AT		219,356
3. K5RZA		210,273
4. W7EVE		209,286
5. K1MK		197,024
6. K3AJ		172,416
7. W4MLB		126,331
8. W7RM		117,000
9. K9JY		108,177
10. KM4OQO		96,432

W/VE, Multioperator

Single Transmitter, Low Power

 1. W9SN		193,320
2. KA4RRU		156,090
3. WF4DX		126,784
4. KT7E		111,300
5. N7GCO		69,278
6. WA1F		66,810
7. N0EO		46,325
8. WS0Z		41,600
9. KO0Z		36,190
10. KF8CEB		20,833

W/VE, Multioperator, Two Transmitter

 1. NJ4P		466,302
 2. K4EA		286,416
3. K7RU		276,710
4. NW8S		192,741
5. K5MXG		47,821
6. K0AE		946

— • • • —

HAMVENTION – TCG Group Photos Opportunities This Month

De Juan AC6ZM

The Dayton Hamvention is fast approaching, taking place May 15–17, 2026. TCG President Ron (WV4P) and Vice President Juan (AC6ZM) are inviting all members to join them for two special group photo opportunities during the event.

The first gathering will be when they break for lunch at **Contest University (CTU)** on **May 14, 2026**, at the **Hope Hotel**. Members should meet out front for a quick group photo before lunch or in the lobby in case of bad weather.

The second opportunity will be on **Saturday, May 16, 2026** during the **Dayton Hamvention**, where we'll assemble at the **bleachers** overlooking the flea market for another group shot.

All members are encouraged to wear their TCG shirts for both photos. If you haven't picked up yours yet, there's still time—visit the TCG online store

at [CorporateCasuals.com](http://www.CorporateCasuals.com) (<http://www.CorporateCasuals.com/logoShare/tennesseecontestgroup>) to order your gear. A variety of options are available to show your TCG pride.

We look forward to seeing everyone at CTU and the Dayton Hamvention for some fun, fellowship, and a few great group photos!



A New TCG Scores Weekly Digest is live

de Ron WV4P

The [TCG Scores Weekly Digest](#) is now live!

The goal is to cut down on emails generated from copied [3830](#) and replace them with one clean weekly digest that is easier to follow and packed with useful data. The dashboard and digest now include much more history, scoring detail, operator credit, and audit information than we have had before.

Posts with stories, high-water marks, operating notes, station highlights, or anything else an operator thinks is worth sharing with the group are still perfectly fine and encouraged. In fact, they will probably get more attention now with fewer emails for everyone to sort through.

It is formatted so it will work OK on most modern email servers, and on mobile devices. Please let Ron WV4P know if you have any specific issues that he can work to resolve.

[3830](#) data is scraped hourly, with Weekly resets at 23:59 UTC on Fridays. Right now, it goes back to 2015, there were a lot of changes made to [3830](#) before that and it's going to be a lot of work importing the earlier data.

<https://tcgscores.com/>

Thanks, Ron WV4P

- . . . -

ARRL America250 Worked All States <https://www.arrl.org/america250-was>

De Cathy W4CMG

ARRL is celebrating a year-long Worked-All-States operating event celebrating America's 250th Anniversary. This is in conjunction with ARRL's 2026 Year of The Club celebration. This event will be exclusively driven only by QSOs uploaded to Logbook of The World (LoTW).

Summary:

The America250-WAS begins as a **Basic Worked All States Award** by contacting all 50 States in 2026. In addition to the basic awards, operators can earn additional **Endorsements**:

ARRL Tennessee Dates: W1AW/4 – TN Region

Dates: (in UTC)

- June 10 – 16
- September 16 – 22

We have a few TCG members who have sent in their availability and shift/mode preferences, but there is always room for more! Please email Cathy W4CMG (ARRL Schedule Coordinator for TN Region W1AW/4) at w4cmg.dx@gmail.com with the dates, times and modes you might be interested in operating as W1AW/4, so that you can get on the list of operators.

Shifts: Listed in Eastern Time (You may request more than one shift per day)

- **Early Morning:** 6 a.m. – 9 a.m.
- **Morning:** 9:00 a.m. until noon
- **Afternoon:** noon to 3:00 p.m.
- **Late Afternoon:** 3:00PM until 6:00PM
- **Evening:** 6:00PM until 9:00PM
- **Night:** 9:00 p.m. - Midnight
- **Overnight:** Midnight – 6:00 a.m.
- **Full Overnight:** 9 p.m. – 9 a.m.

Shift assignments, including timeslots, bands and modes will be sent to all TN Region clubs who have participants on the list in mid-May (after Hamvention) to make time for Clubs to finalize their participant lists and raise any questions or issues prior to our dates.

- . . . -

MEMBERSHIP RENEWALS & NEW MEMBERS

Thank you to Jim K0XV for your TCG membership renewal.

TCG membership is open to all with an interest in contesting. There are no geographical limitations. All you need is a sincere interest in contesting, and the willingness to get on the air and operate with us. If you have someone that you would like to nominate as a new member, please e-mail K0EJ (mark.speck.k0ej@gmail.com) so an invite can be sent out.

A reminder that in order to more efficiently maintain MRA awards, HamClubOnline, TCG reflector roster, TCG website roster, and the financial spreadsheet.

TCG Member Spotlight – KR4EE

By Jilly Dybka, KR4EE

I grew up in Michigan during the CB radio craze, but barely noticed it—and no hams around. Somehow, in the late 1980s I fell hard for shortwave: DXing, SWLing, and collecting QSLs with help from NASWA, Monitoring Times, and Pop Comm. My QSL albums:

<https://www.flickr.com/photos/jilly9/albums>

After marrying and moving to Tennessee (my mom's home state), I discovered my husband's boss, Chet, * was a ham. He became my Elmer, supplying an ARRL handbook, W1AW code cassettes, and demos on his Collins rig plus repeater contacts from his Ford Bronco.

In 1998 I got my Tech Plus ticket through CATS VEs in Clarksville. I won roulette money in Vegas (at my nephew's Elvis wedding) and bought a Heathkit HW-101 on eBay. I asked a local ham up the street for help and Kirk K4RO, kindly came over, showed me how to tune the boatanchor into my homebrew dipole, then went home so we could make my first QSO.

Health and life have sidelined me often—currently too swamped to operate much. When possible, I enjoy POTA, special event stations, digital modes, meteor scatter, antenna experimentation, and contesting from our DeKalb County QTH. I hope to return to CW when my life allows more time for radio. Last year, the power company even left a decommissioned telephone pole up in our yard for future use! (I asked nicely.)

My nephew is still married. I'm still married. I still have the Heathkit. I don't know what happened to the Elvis impersonator.

*Chet Atkins, W4CGP at the time.

73 de Jilly KR4EE

—•••—

Signals Across the Caribbean: A Tennessee Contest Group DXpedition to Montserrat for 2025 CQ WW DX CW

de Juan Lopez AC6ZM

After a successful win in CQ WW DX-CW as part of the VP5M team in 2024, I anticipated a return to Turks and Caicos with a TCG Team for the 2025 CQ WW DX-CW contest. However, with the future availability of VP5M 1 in question in early 2025, I decided to start looking for an alternate location to venture off to. I started to query experienced operators from TCG and CWops members at large. There was no shortage of ideas along with DXpedition stories of their own to make the location appear qualified for a potential return appearance. I received many suitable locations mostly in the Caribbean.

Several locations were indeed available and made the first round of potential selections. However, I was most intrigued by Montserrat. I had gathered valuable experience traveling abroad to play radio at this juncture and felt confident I could pull off a more ambitious

adventure with a TCG team in tow. From the outset it felt like one of those ambitious dreams that hams toss around but rarely act on. So, in November 2025, a team of three that consisted of 3 TCG members and one from Utah packed their keys, rigs, and laptops for an unforgettable journey to the emerald slopes of Montserrat. Their destination: Gingerbread Hill, a legendary spot for DXers seeking pileups and breathtaking island views.

Figure 1. left to right. Cathy (W4CMG), Ben (AD7N), Randy (WK9M), and Juan (AC6ZM)



This wasn't just a vacation—it was a mission to put VP2M on the air in one of the most competitive CW events of the year. With careful planning, innovative station setups, and a passion for radio sport, the group transformed a quiet hillside retreat into a high-performance contest station, bridging thousands of miles with many dits and dahs sent across the bands. This article is a trip report of how this contest DXpedition came together and describes what worked, what didn't, and what we learned along the way.

Planning the Adventure

From Idea to Itinerary

DXpeditions don't begin with antennas or radios, they begin with spreadsheets. The very first requirement is to get commitment from enough team members to make the trip worth executing. Although most Dxpediton teams prefer to have top notch operators, realistically you take what you can and plan, practice, and execute. Operating in DX land requires operator availability (difficult during Thanksgiving), enthusiasm, the financial resources to cover travel, lodging, meal expenses, licensing fees, and costs of an island tour. For this trip TCG members W4CMG (Cathy), WK9M (Randy), and W5MX (Bryan) stepped up and made the commitment. As a side note, late in the game, W5MX had a short notice work commitment in Germany that prevented him from attending. Subsequently, AD7N (Ben) from Utah stepped in as a substitute to complete the team. Once the team committed to Montserrat, the planning engine kicked into gear. What equipment was available? How would we transport everything? What are the customs entry requirements? What are the required passport and foreign license lead times. And perhaps most importantly: could we assemble a station capable of being competitive in the **Low Power Multi-Single** entry?

Weekly calls turned into shared documents, which turned into gear lists, which turned into weight calculations. Every operator took a role: logistics, licensing, antennas, station engineering, travel coordination, and equipment acquisition. The excitement grew with every decision. Since we are separated geographically in the U.S., we opted to meet via Google teams and shared documents through Google drive.

Bench Testing and Packing

Before anything went into a suitcase, it went onto a table for bench testing. We staged a full mock-up of the contest station in the team leaders' radio lab—radios, filters, laptops, networking gear, switching hardware, and associated cables. We tested interstation interference, verified N1MM+ networking, baluns, and even simulated contest conditions to ensure the system would hold up under pressure. Everything was labeled clearly and diagrams were prepared and refined.

Packing became its own engineering challenge. Accessory equipment was ordered, 75 ohm coaxial cable was coiled and labeled for two terminated beverage antennas. Pelican cases were weighed and Pick-and-Pluck foam inserts were customized for the equipment. Lithium batteries were isolated and documented. Every cable was zip-tied, every connector bagged, every serial number recorded for customs paperwork. Table 1 provides the main components that comprise the contest station.

Table 1 Equipment List

Equipment	Description	Model
Transmitter x2	Kenwood	TS-590SG
160 meter antenna	135 ft Inverted L with elevated radial	Home brew
80 meter antenna	Full-wave sky loop with ¼ wavelength tuning stub	Home brew
40 meter antenna	Delta Loop – 4:1 Balun (resonant on 15 & 40 meters)	Home brew
10-15-20 meter antenna	Tri-bander (10/15/20 meters)	Mosley Classic
Beverage receive antenna	1. 500 ft, terminated 2. 470 ohm resistor (RXT-470) F-Type Transformer (BT-75)	Unified Microsystems
Antenna switch	8x2 version	403A Antenna Genius
Bandpass filter (Passive)	Perfo Box used for 160/80/20/15/10	Low Band Systems PB-FXX ¹ -200
Bandpass filter	Used for 15/40 Delta Loop	SureFire BF-100
Quadplexer	Perfo Box (used for 10/15/20 meters only)	Low Band Systems PB-QP200
Computers x3	laptops (1 Run, 1 Mult, 1 Backup)	Windows 11, 64-bit
Logging software	Electronic logbook - Network	N1MM+

¹ Replace XX with frequency band in MHz (e.g., 14 for 20 meters, 21 for 15 meters)

	mode	
Pan Adpater	SDR receiver	SDRplay (RSP-1B)
Audio splitter x2	4-channel stereo headphone amplifier	Pyle (PHA40)
Ethernet switch	8-port gigabit switch	Netgear (GS-108)
Power supply x2	12 VDC switching power supply	Opek (OP-3002)
Antenna Tower	65 foot Telescopic w/motor	US Tower

By the time we left Tennessee, we knew exactly where every piece of equipment lived and how it would be used. With some fore thought, we packed each radio in an individual Pelican case with everything needed to get on the air in the unfortunate event a piece of luggage gets delayed or misplaced in transit with connecting flights. This minimizes the risk that the event results in a busted operation, like a failure to launch type of thing. The final station layout is displayed in figure 2.

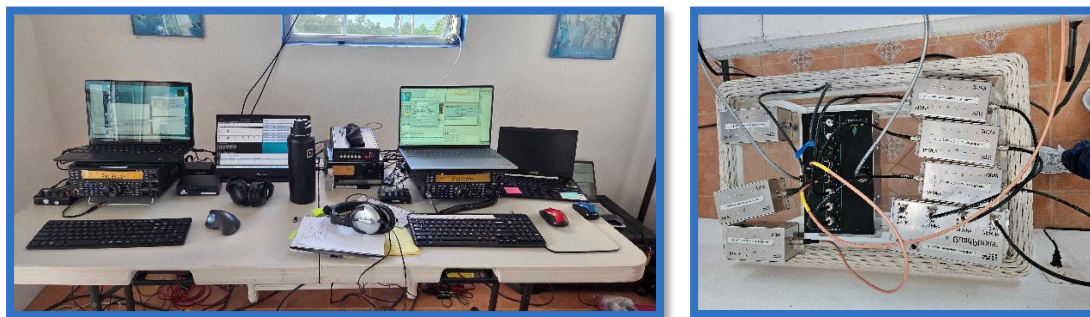


Figure 2. Station layout with bandpass filters and 4O3A AG

The bench testing was extensive and required a major configuration change halfway through testing to accommodate automated antenna switching and bandpass filtering for two stations (Run and Mult). The original plan called for complete automation by implementing a band decoder and multi-band single box bandpass filter (SueFire MIC-7 band decoder coupled with SureFire BF-100² bandpass filter). However, we had a requirement to share two antennas and encountered conflicts. We opted to include a 4O3A Antenna Genius (AG) 2 X 8 with PerfoBox passive band pass filters for 10/15/20/80/160. An exception was the 40 meter delta loop which was also used for 15 meters. However, we implemented the SureFire 6-band BPF so the operator can manually select between 15 or 40 meters if they opted to use that specific antenna which was assigned to a single port of the 4O3A AG. Using the 4O3A AG allowed the operators to switch bands and the next available antenna would be automatically selected for the Run or Mult station making the system more efficient and less error prone.

4O3A Antenna Genius (AG) with a DX Bridge

The 4O3A AG 8x2 is a high-end antenna switch matrix designed for contest stations and

² The BF-100 is a transceive capable filter that handles up to 100 watts RF. It provides excellent receive rejection of out-of-band signals, especially of adjacent contest bands, with low insertion loss and low SWR. This filter is easily operated manually with front panel pushbuttons for quick bands selections. Automatic operation is simplified with several methods of band selection control.

DXpeditions where multiple radios and antennas need to be managed efficiently. The 4O3A AG 8x2 delivers exactly that. It is an intelligent antenna switch matrix designed for high-performance setups, allowing two radios to share up to eight antennas seamlessly. At its core, the Antenna Genius operates as an 8x2 matrix: eight antenna ports can be dynamically assigned to two radio ports. This makes it ideal for SO2R (Single Operator Two Radio) contesting or multi-operator environments where antenna sharing and isolation are critical. The system uses high-quality relays for full RF isolation, ensuring that one radio's signal never interferes with the other.

AG control is simple and powerful. The device connects via Ethernet and integrates with popular contest software such as N1MM+, Win-Test, and station automation tools. It can automatically switch antennas based on band data from the radios, reducing the operator's workload and preventing costly mistakes. Rated for legal-limit power, the Antenna Genius is built for reliability and remote operation, making it a cornerstone of modern contest station design. But wait for it...herein lies the rub, it must use ethernet connectivity. With the TS-590's only having a serial connection for sending band data we needed a solution where IP data can be sent to the antenna genius from the logging software. The DX AG Bridge software developed by YO3HEX (Gabriel "Dex") from Romania came up with a slick software-based solution. Thanks to WV4P (Ron) for assisting with finding a potential solution to this problem.

DXaG_BridgeV2 Software Application

DXaG_BridgeV2 is a specialized software utility designed to integrate and manage Antenna Genius (by 4O3A) within a contest or DX station environment. Its primary role is to act as a bridge between Antenna Genius hardware and third-party logging or automation software, ensuring smooth communication and band-aware switching. Think of DXaG_BridgeV2 as the translator and traffic controller for your station. It listens to your radios and contest software (such as N1MM+ or Win-Test) to know which band each radio is operating on. Based on that information, it tells the Antenna Genius which antenna to connect for a specific radio— instantaneously and without operator intervention. If two radios try to use the same antenna, DXaG_BridgeV2 steps in and prevents conflicts, protecting your equipment and keeping the contest running smoothly.

The software runs on your local network, so you can control and monitor antenna assignments from anywhere in the station. By automating antenna switching and integrating with your logging software, DXaG_BridgeV2 eliminates manual errors and speeds up band changes, which is critical in high-paced contesting or DXpedition environments. Table 2 describes several key features:

Table 2 DXaG_BridgeV2 Feature Summary

Feature	Description
Primary Function	Acts as a bridge between Antenna Genius hardware and contest/logging software
Control Interface	Provides GUI for antenna matrix configuration and monitoring
Band Data Integration	Reads CAT data from radios or contest software for automatic antenna switching

Feature	Description
Conflict Management	Prevents simultaneous antenna selection by two radios; lockout logic included
Software Compatibility	Works with N1MM, Win-Test, and other station automation tools
Remote Operation	Supports LAN/WAN connectivity for off-site control
Automation Support	Enables SO2R and multi-op contest automation
Status Monitoring	Displays real-time antenna assignments and switching activity
Ease of Use	Simplifies complex antenna routing; reduces operator workload
Ideal Use Cases	Contest stations, DXpeditions, remote-controlled setups

However, no software is ever 100% perfect at initial release. I discovered that the S/W worked flawlessly with N1MM+ in every operating category except the M/S category. It appears N1MM+ assigns a radio number (Radio 1 [run] and Radio 2 [mult]) internally which subsequently shows up correctly in the N1MM+ networking window. However, the IP broadcast message doesn't distinguish between both radios and instead broadcasts all packets as radio number 1 regardless of which radio is changing bands. This causes an issue with the 4O3A AG where any band change is reflected on the same radio port regardless of which radio performs a band change. I discussed this version 1 bug with YO3HEX during initial testing, and we quickly agreed on a fix. For version 2, the radios are assigned radio number 1 or 2 based on the assigned IP address of the PC associated with each radio. We opted to assign a static (persistent) IP address in case a reboot happens due to a power outage. A laptop reboot could cause the DHCP feature to assign another IP address to the laptop and could create a troubleshooting issue to resolve during the contest. We try to mitigate that possibility beforehand as many of veteran TCG members can attest to. Power outages are a common occurrence at island locations, and we wanted to mitigate that possibility. The software does the translation and the 4O3A AG switches antennas for the correct radio port on the correct band...problem solved!

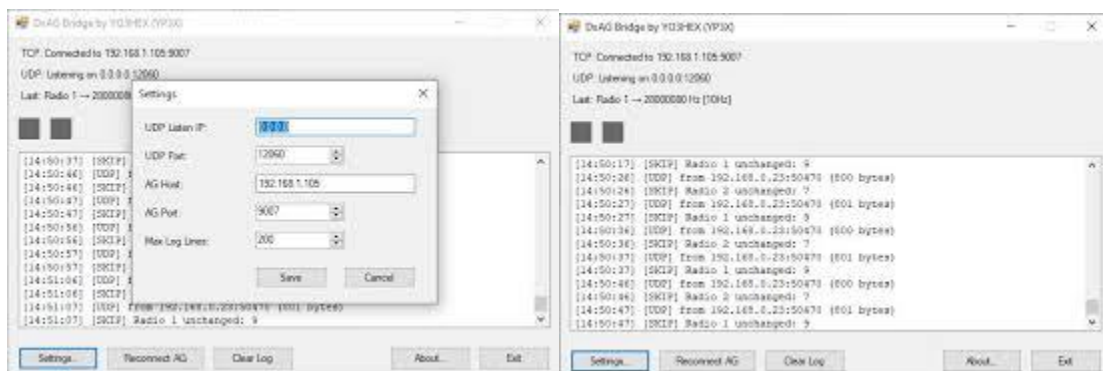


Figure 3. DXaG_Bridge; left: config screen; right: live stream capture

For those interested in downloading and using the software with AG, it is available from <https://rig2cast.com/downloads>

Montserrat Licensing Experience

Montserrat is known for being friendly to visiting amateurs. However, amateur radio licensing requires preparation. They do not allow reciprocal licensing arrangements where you can use a prefix with your home callsign (e.g., VP2/AC6ZM). Five weeks before departure, we submitted a completed Form D (amateur license) application (via email) with supporting documentation which includes:

1. one passport-sized photograph
2. copies of the technical specification of relevant equipment
3. proof of a radio amateur qualification (note: waived for us)
4. copy of any existing license of a similar nature from any country

The Montserrat issued license arrives via email with an itemized equipment list printed on the back of the license. To pay the license fees for the entire team, I opted to receive an internet link from the Montserrat Info-Communication Authority (MICA) to pay by credit card online as a bulk payment for all members of the team. This greatly simplified the process of issuing the licenses. Most voice communications between myself and the license issuing representative occurred using WhatsApp (this was their preference). For anyone considering operating from Montserrat: start early, be patient, and bring printed copies of everything. The process is smooth, but only if you're organized.

Building a Contest Station on a Volcanic Island

Accommodation at Gingerbread Hill

Gingerbread Hill is a family-run guest property on Montserrat that has become a favorite among traveling amateur radio operators, DXpedition teams, and visitors looking for a quiet, comfortable base on the island. Located on a scenic ridge above St. Peter's, the property offers sweeping views of the Caribbean Sea, Montserrat's lush hillsides, and the distant outline of the Soufrière Hills volcano.

The accommodations are divided into several self-contained units, each designed to feel like home rather than a hotel. The **Heavenly Suite**, the most frequently chosen lodging for DXpeditions, is a spacious multi-room apartment with a full kitchen, large living area, dedicated bedrooms, and a private veranda positioned for sunrise and sunset views. Operators particularly appreciate the ample outdoor space around the suite, which makes it easy to deploy wire antennas, verticals, and support lines without disturbing other guests.

Other units on the property—such as the **Sea Breeze** and **Coconut Cottage**—offer smaller but equally comfortable setups. All units include full kitchens, private baths, reliable Wi-Fi, and access to on-site laundry facilities. Many rooms feature open-air porches or balconies, allowing guests to relax outdoors and take in the island's quiet, unspoiled landscape. We opted to rent three units which were all contained in a single 3-story structure.

Gingerbread Hill is also known for its friendly hosts (Dave and Clover), who are accustomed to supporting amateur radio operators. They are US citizens that have been living abroad since the 1970's. They provide flexibility for antenna placement, assist with logistics when possible, and offer local knowledge that is valuable for both tourism and radio operations. The property's elevated position and low noise floor make it a particularly attractive choice for DXpeditions and contest efforts, offering both comfort and radio performance in one location.

Our rental villa sat on a hillside overlooking the Caribbean Sea, with enough open space for wire antennas and a noise floor that made us feel like we were operating from another planet. The 160 meter band noise floor was flat. We thought the coax was not connected when we first tested it out. Power was stable, although we brought surge protection and backup options just in case.

Radio-Operator-Focused Review of Gingerbread Hill

For amateur radio operators, Gingerbread Hill is more than a comfortable place to stay—it is one of the most operator-friendly QTHs in the Caribbean. The property's elevated position on Montserrat's western ridge provides excellent takeoff angles to North America and Europe, and the quiet rural setting yields a remarkably low noise floor across HF bands. Even simple wire antennas perform well here.

From a practical standpoint, Gingerbread Hill is uniquely accommodating to DXpedition teams. The grounds around the Heavenly Suite offer ample space for stringing up dipoles, verticals, end-fed wires, and temporary masts. Trees and open sightlines make antenna placement flexible, and coax runs can be kept short. Operators routinely deploy multi-band antennas within minutes of arrival.

Inside, the operating environment is equally favorable. Reliable AC power, strong Wi-Fi, and generous workspace allow teams to set up multi-radio stations with ease. The hosts are accustomed to supporting antenna installations, equipment shipments, and the occasional late-night operating schedule. Many visiting teams have praised the seamless balance of comfort and station functionality, which makes it possible to contest for long hours without compromise. The site also has a 75-foot motorized crank-up tower we elevated to 65 feet (it is customary to leave sufficient overlap with tower sections due to constant high winds for safety reasons).

Whether running high-rate contest exchanges or casual DX, the combination of altitude, quiet surroundings, and accessibility makes Gingerbread Hill a standout location for HF operation—and a proven venue for CQWW-quality stations. Lastly, think of Gingerbread Hill as a ham friendly rental location.

Station Architecture

The heart of the operation was a pair of well-tested transceivers feeding bandpass filters, a quadplexer, and a carefully planned switching system. Laptops ran N1MM+ in a networked configuration, with redundant logging and real-time score reporting.

Contesting Benefits of Gingerbread Hill

- **Excellent Takeoff Angles**
The property's elevated ridge location offers strong paths into North America, Europe, and South America—ideal for high-rate contesting.
- **Exceptionally Low Noise Floor**
The rural surroundings and lack of urban RF sources provide quiet HF conditions, allowing weak-signal stations to be pulled from noise.
- **Flexible Antennas Deployment**
Ample open space and well-placed trees—including dipoles, verticals, end-fed wires, and lightweight masts. Ideal for both temporary and semi-permanent contest antennas.
- **Reliable Infrastructure**
Solid AC power, robust Wi-Fi, and easily accessible operating space supports multi-radio setups and long contest hours.
- **Operator-Friendly Hosts**
Gingerbread Hill's owners understand the needs of amateur radio operators and are supportive of antenna installation, feed line routing.

Operating strategy was built around propagation predictions: high bands during the day, low bands at night, with operator shifts designed to keep everyone fresh. The tropical heat added a layer of challenge, but the excitement of running pileups was more than compensated. Our operating position was set up on the top floor in the Heavenly Suite. We set up a long picnic type table to allow for side-by-side operation for the Run and Mult stations (see figure 3). We left the porch sliding door and the second floor entrance door open which provided a constant cool breeze to make operating very comfortable.



Figure 4. Operating position for Run and Mult Stations (notice the stacked pelican cases for transiting equipment).

POTA on Montserrat

No DXpedition is complete without a little portable fun. Montserrat has two POTA locations of which neither has ever been activated. AC6ZM and AD7N were itching to get on the air to establish an “ATNO Activation” after the contest. The park designations are MS-0001 (Center Hills Forest Reserve and MS-0002 (Jack Boy Hill Nature Recreation Reserve). A quick map recon quickly excluded venturing into MS-0001. The park was not easily accessible with a regular passenger vehicle with no clear indication of a suitable location to set up. Furthermore, the POTA website posted the following: “This is a nature reserve for multiple endangered species. Please activate with the utmost respect for the surrounding nature. The southern third of this park is within the volcano exclusion zone. DO NOT ATTEMPT TO ACTIVATE FROM WITHIN THE EXCLUSION ZONE.” We opted to heed the warning. MS-0001 looked to be more of a Summit-on-the-Air (SOTA) than an easy POTA park-n-play operation.

To err on the safe side, we opted to have our tour guide include a stop or drive-by recon through MS-0002. The visual on-the-ground recon turned out to be a worthwhile event. The place was perfect. Jack Boy Hill, also known as Jack Boy Hill Viewing Facility (see figure 4) which is known to be the best place where people can observe the still active Soufrière Hills volcano which is in the eastern part near the sea on the British Overseas Territory of Montserrat. Being a great vantage point for panoramic viewing of the volcano, the landscape is at its grittiest and harshest one as visitors can witness from firsthand the great devastation

Soufrière Hills did when it erupted constantly between 1995 and 1999. Although the facility is small, it has a viewing platform with fixed binoculars which can take every visitor closer to the destroyed W. H. Bramble Airport, the old estate house, the site of destroyed eastern villages which are all covered by volcanic pyroclastic flows, in addition to the volcano itself. There are also picnic areas, barbecue pit, washrooms, a mini trail and landscape grounds that offer an even better experience to the visitor willing to learn and explore more about this phenomenon.



Figure 5 POTA Jack Boy Hill (MS-0002)

Both operators had made two-way communications with 12 QSO's each in the log during this activation. AC6ZM's first and last QSO were K5OHY and WA2SPL. Other notable contacts were JH1GEX, HK5NLJ/3, VE7CV, and PJ4KV. The remaining QSO's were stateside stations. So, the burning question after reading all about the POTA activity is "What gear did y'all use?" We had a Yaesu FT-891, a Chelegance MC-750 portable HF vertical antenna with tripod and radials. The power source was 6-Ah battery. For many hunters, Montserrat was a rare catch, and the activation became one of the most memorable moments of the trip. The cherry on top was the fact that this has become thirteenth POTA activation of MS-0002.

Flying With Radios: What We Learned

Traveling with radio gear through multiple countries is an adventure and this trip also proved it can be a costly one as well. Standard baggage fees for domestic and Caribbean flights are \$40 for the first bag and \$50 for the second bag. The baggage fee for a third bag is a whopping \$200. We had 5 pelican cases that was distributed across the team and a few of them turned out to be the expensive 3rd bag.

Airport Security

TSA agents in the U.S. were curious but professional. Caribbean airport staff were even more inquisitive—coax, baluns, and CW paddles aren't everyday items—but polite explanations and printed documentation smoothed the process. Have a suitable story to explain to baggage/custom inspectors that is simple and believable. In Montserrat they are accustomed to seeing test equipment with non-local travelers. Lithium batteries had to be packed in carry-on baggage.

Advice for Future Travelers

- Label everything
 - Carry documentation
 - Expect to unpack and repack gear at least once
 - Build extra time into every airport connection
 - Carry cash to tip baggage assistance
-

Reflections From the Island

Technical Takeaways

Some things worked flawlessly: the filters, the networking, the antennas. Other things—like humidity-induced SWR drift and a finicky USB interface—reminded us that field operations always involve surprises.

Team Dynamics

The best part of the trip wasn't the contest score or the rare DX. It was the teamwork and comradery that won the day and made the trip a pleasant event. Every challenge became a shared puzzle where every success felt like a group victory.

It was also interesting to learn that Cathy's (W4CMG) birthday was on the weekend of the contest. To quickly mark the event, we quickly put together a surprise birthday party and rounded up an appropriate cake (figure 5) to mark the milestone event. Happy Birthday Cathy!



*Figure 6. Birthday **RUN** cake (formally RUM cake)*

During our Montserrat visit, we participated in two non-contest activities: Thanksgiving dinner and a narrated island tour. We visited Olveston House, a former residence of Beatles producer Sir George Martin, notable for its British-Caribbean menu and historical ties to AIR Studios, which hosted major musicians like Elton John, Michael Jackson, Dire Straits, and The Police until Hurricane Hugo in 1989. Managed by Carol Osborne and Margaret Wilson, Olveston House was frequently visited by Martin, serving as a temporary home for artists recording at AIR Studios. Our Thanksgiving meal featured turkey, stuffing, and Caribbean-

inspired sides (see figure 7).



Figure 7. Thanksgiving dinner Montserrat style

We toured Montserrat with Sun, son of Gingerbread Hill's hosts, who shared stories of his family's videography documenting the Soufriere Hills Volcano for the History Channel. Sun's involvement with "Price of Paradise" and the Montserrat Volcano Observatory added depth to our experience, as he explained volcanic activity and showed us areas lost to ash—including his own childhood home and family coffee shop. With government permission, we visited the guarded exclusion zone. The tour was memorable and highly recommended.

Conclusion: A Trip That Changed Us

The Montserrat DXpedition wasn't just a contest entry, it was a journey that deepened friendships, sharpened skills, and reminded us why amateur radio is such a powerful global connector. There's nothing quite like calling CQ from a rare island and hearing the world answer back. The pileups were intense, the operators focused, and the experience unforgettable. We returned home tired, sunburned, and were already talking about the next adventure. Because once you've tasted the thrill of sending CW from a Caribbean volcano, it's hard not to start planning the next signal across the sea. Thanks to all the TCG members that offered advice, recounted experiences, and lessons learned from this type of radio activity.

de Juan AC6ZM

— • • • —

Note re: the Montserrat DXpedition from Cathy W4CMG:

How can one top operating from a beautiful Volcanic Island in the Caribbean with an amazing team of operators on their birthday? Thanks to Juan, Randy and Ben for making this an unbelievable experience!

BEST BIRTHDAY EVER

— • • • —

Corporate Casuals – TCG Logo Items

Corporate Casuals now uses what's called a /*sharelink */in which they share the TCG logo with club members through their webstore platform. The link below will take you to their website and prompt you to create an account with them. The page will look like the screenshot below (and will show the logo at the bottom of the screen).

You can add a personal callsign as a personalization ("NAMES" icon in the product) and select the placement location on the purchased item (e.g., polo, bag, hat, etc.). Once the account is created, the logo will automatically upload to the account for use:

<http://www.CorporateCasuals.com/logoShare/tennessecontestgroup>

— • • • —

Upcoming Hamfests:

Hamvention: -Dayton Hamvention (yes, I know it's in Xenia!)

- For anyone planning on going to Dayton Hamvention, here is a link to their site: <https://hamvention.org/>
- Scroll down for links to everything from hours and maps and directions to forums, license exams and FAQs.
- Rooms may be tough to come by, but if you are looking for one, keep trying to contact local hotels. There may be some last-minute cancellations.
- Looking to Volunteer to help out with the Forums? Don KC0DWZ noted that in **past** years, Volunteers for the Forums got free passes and free parking. No guarantees of the perks this year, so contact Chris, N8PEM, who is one of the volunteer coordinators for the forums for more details.
- Contest University: <https://www.contestuniversity.com/course-outline/> in Xenia – the Thursday before Hamvention.

Four Days in May: <https://qrparci.org/fdim>

For those who are new to the club or have never made the Four Days In May event, it is the annual gathering of the QRP Amateur Radio Club International. It is held in the Fairborn Ohio DoubleTree Hotel May 14 - 17 2026, beginning the day before the opening of the Dayton/Xenia Hamvention, and has events that take place during the evening of the Hamvention weekend. Hams who come to Dayton for the Hamfest can come one day early and enjoy all that both events have to offer.

Lebanon Hamquest
de Bert W4KW

The 2026 Lebanon Hamquest will be held July 11th at the Wilson County Fairgrounds in Lebanon, TN.

- **Location:** [James E Ward Agricultural Center](#), 945 E. Baddour Pky, Lebanon, TN.
- **Date & Time:** Saturday, July 11, 2026, 8:00 AM – 3:00 PM.

Held in the air-conditioned "Made in Tennessee Building," the event features indoor vendors, tailgating, educational forums, and VE license exams.

The Lebanon Shoney's meeting room has been reserved for the TCG lunch from noon thru 2 PM on the 11th. Hopefully we can have a Great turnout.

Huntsville Hamfest: August 22 & 23

- Huntsville Hamfest: <https://hamfest.org/> in Huntsville, AL – a great place to try out equipment before you buy it!
- Sponsored by the Northern Alabama DX Club, there will be a DX dinner on the Saturday night of Huntsville Hamfest

—•••—

Heading for a Hamfest?

de Cathy W4CMG

Prepping for the Hamfest:

- Cash is king! A lot of vendors prefer – and some will only take – cash, so pad your wallet, or make sure you know where the nearest ATM is.
- Make a list – know what you want to buy. It will help you remember the things you really want to pick up there – AND may help to reduce “impulse buying”
- Do your homework. Check the leading vendors and perhaps some other sites – like eBay or QRZ.com for items for sale to get an idea of the “going price”
- Check sites that are NOT vendors to get some honest ratings about products you are interested in.

Once you're there

- In the “Bone Yard” aka “Flea Market” – know your prices, and your price cap.
 - o Check the offerings. Ask if you can look inside a rig to see if there are broken or “blown” tubes, dust and cat hair, loose parts, corroded batteries....
 - o Try before you buy if possible – or you may bring home something that doesn't work as expected
 - o Many Hamfests have areas set up with antennas so you can try out a rig before you purchase it
 - o Inexperienced? New to Ham Radio, CW, etc.? Take an experienced operator with you to get their opinions – and listen to them
- In the vendor areas:
 - o Know typical prices
 - o If you are looking for a product (e.g. Key) from a specific specialty vendor, their prices might drop toward the end of the Hamfest – OR they may run out of the item you are looking for. Sometimes they will offer a deal if you order your item, BUT there may be extra shipping and sales tax involved.
 - If you are really set on getting that product, buy it early in the Hamfest before it disappears from the vendor stock
 - o Multiple vendors – same product: Prices WILL vary, so shop around. Sometimes the “maker” of the product is not the cheapest place to buy it from

- Forums – print out the list of available forums, highlight the ones you REALLY want to go to, and set an alarm in your phone to give you enough time to get to where they are being held.
 - o Note that it might take you 20 minutes to walk 50 feet if you know a lot of folks (see “social aspects”) so plan accordingly.

The Social Aspects:

Hamfests are the right place to meet and renew friendships with folk you only hear on the air. There is nothing like an “eyeball QSO” with someone you talk to on the air (even with just your fingers 😊) so plan on a LOT of social time. Before, during and after the day’s events.

- o If you have a conversation with someone that lasts more than a minute or two, take it away from the vendor booths. You are keeping their customers and visitors from getting to them.
- o Bring some “eyeball QSO cards” and/or some QSL cards so you can give them to folks you meet.
- o Plan to attend your club gatherings. Many belong to multiple clubs, so you may have to choose between them.

- . . . -

UPCOMING CONTESTS

The following table is a list of the upcoming contests which qualify for the TCG Most Radioactive Award. For more information on the MRA, please refer to K4TCG.ORG under the TCG INFO section. Thanks to Jim AD4EB for this list, and to Ted W4NZ for administering the TCG Most Radioactive Award.

May 2, 2026	7th Call Area QSO Party
May 2, 2026	ARI International DX Contest
May 2, 2026	Delaware QSO Party
May 2, 2026	Indiana QSO Party
May 2, 2026	New England QSO Party
May 9, 2026	Canadian Prairies QSO Party
May 9, 2026	CQ-M International DX Contest
May 9, 2026	Volta WW RTTY
May 16, 2026	Arkansas QSO Party
May 16, 2026	His Majesty King of Spain Contest, CW
May 30, 2026	CQ WW WPX Contest, CW
June 6, 2026	ARRL International Digital Contest
June 6, 2026	Kentucky QSO Party
June 7, 2026	Atlantic Canada QSO Party
June 13, 2026	ARRL June VHF Contest
June 13, 2026	GACW WWSA DX
June 20, 2026	All Asian DX Contest, CW
June 20, 2026	Stew Perry Topband Challenge-Jun

June 20, 2026	West Virginia QSO Party
June 27, 2026	His Majesty King of Spain Contest, SSB

Progression of solar cycle 25

Sunspot numbers including predictions:

